

SHSAT

Qun #5

① Heights: $2.5 : 5.0 : 12$
 $\times 2 \quad \times 2 \quad \times 2$

D $5 : 10 : 24 \xrightarrow{\text{same}} \text{D) } 0.5 : 1.0 : 2.4$

② $a=2$ $b=7$ $a^{b-1} - b^a = 2^6 - 7^2 = 64 - 49 = 15$

E

③ Devon's Exams $\frac{\text{All Points} + 6^{\text{th}}}{6} = \text{Exam Average}$

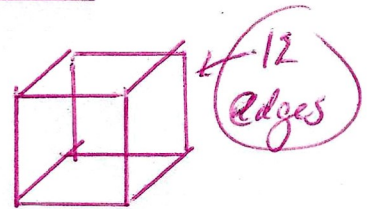
A

$$\frac{80 + 75 + 82 + 91 + 95 + x}{6} = 85 \quad 423 + x = 510$$
$$423 + x = 6 \cdot 85$$

$x = 87$

④ Sum of edges is increased by 24.

D



⑤ $\frac{70 \text{ km}}{26 \text{ min}} \cdot \frac{60 \text{ min}}{1 \text{ hour}} \cdot \frac{1 \text{ mile}}{1.609 \text{ km}} = \frac{1200 \text{ miles}}{41.834} = 28.68 \text{ mph}$

29

Just say for CHANG Learning Center